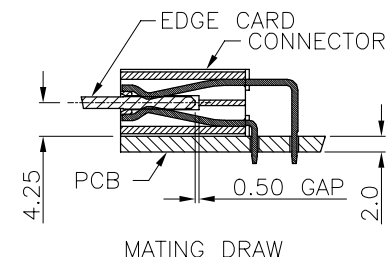
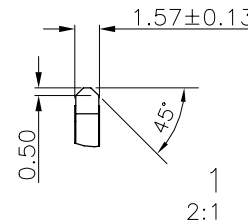
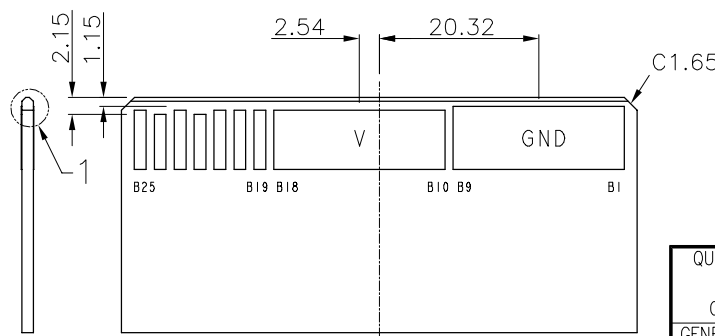
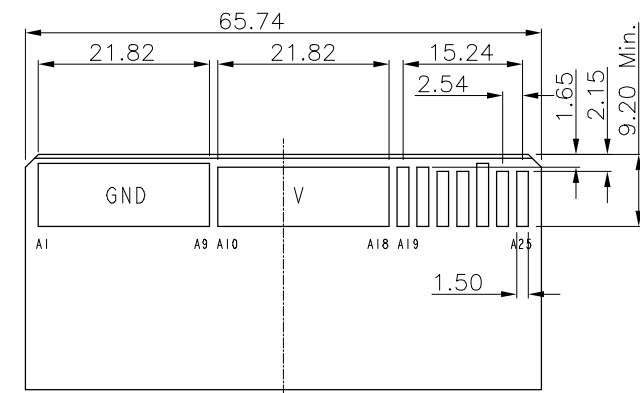
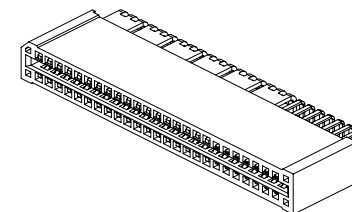
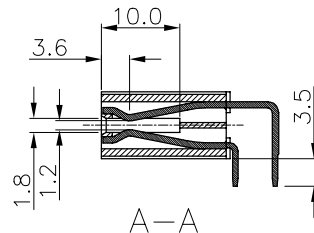
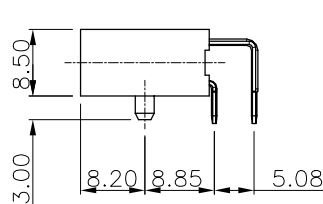
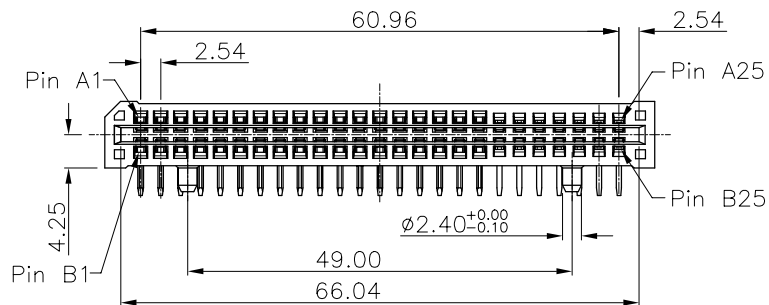


RECOMMEND P.C.B LAYOUT
THICKNESS IS 2.0±0.1MM; DIMENSION
TOLERANCE: ±0.05MM

NOTES:

1. MATERIAL:
 - 1.1 HOUSING: THERMOPLASTIC, HIGH TEMP., UL94V-0; COLOR: BLACK.
 - 1.2 CONTACT: COPPER ALLOY
2. FINISH:
 - CONTACT: SEE ORDER INFORMATION.
 - UNDERPLATING: 50~100u" NICKEL OVERALL.
3. REFLOW SOLDER CAPABLE TO 260°C PER ACES SPEC.
4. SPEC. PLS. REFER TO PS-52936-xxxxx-xxx
5. PACKAGE PLS. REFER TO 52936-xxxCR-U
7. PART NUMBER
52936-XXX X X -001

CKTS _____ CONTACT PLATING
050.50 PIN D.Au 30u" ON CONTACT
PACKING _____
0.TAPE&REEL



RECOMMEND EDGE CARD LAYOUT (TOP VIEW)
THICKNESS IS 1.57±0.13MM; DIMENSION
TOLERANCE: ±0.05MM

QUALITY SYMBOLS MAJOR CRITICAL GENERAL TOLERANCES (UNLESS SPECIFIED) X. ±0.5 .X ±0.25 .XX ±0.15 .XXX ±0.1 ANGLES ±2°	DRAWN BY HSU YI LUN	DATE 21/08/03	
	CHECKED BY CHEN CHUN YUAN	DATE 21/08/03	
	APPROVED BY HUANG KUO HUA	DATE 21/08/03	RFG NO. N/A
UNITS mm		SIZE A4	DWG NO. 52936-xxxxx-xxx
SCALE 1 : 1	SHEET NO. 1 OF 1	REV E	